

Chess Flash Cards!

1. ... Openings responses

???

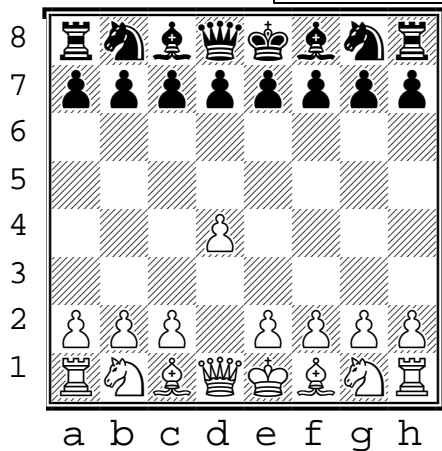
A40 (1)

1. ... openings

1. d4 ...

(black to move)

Top 2 GM responses



???

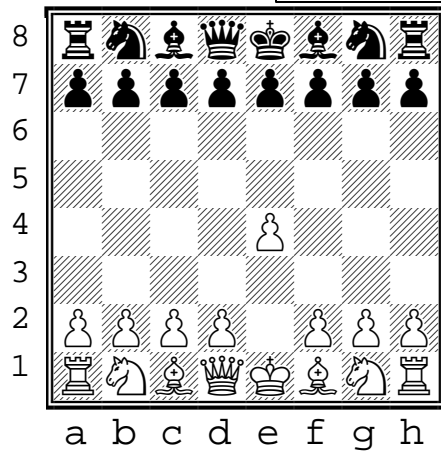
B00 (2)

1. ... openings

1. e4 ...

(black to move)

Top 4 GM responses



???

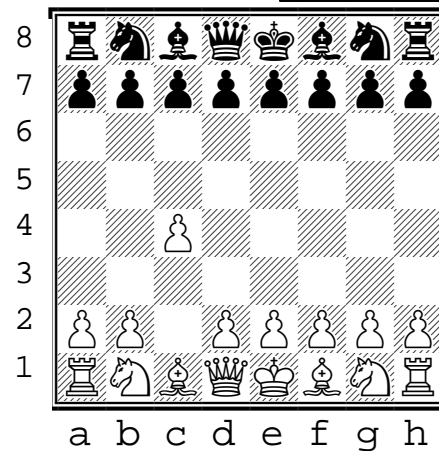
A10 (3)

1. ... openings

1. c4 ...

(black to move)

Top 2 GM responses



???

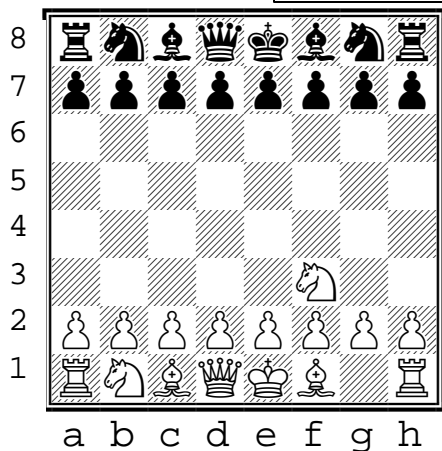
A04 (4)

1. ... openings

1. Nf3 ...

(black to move)

Top GM response



???

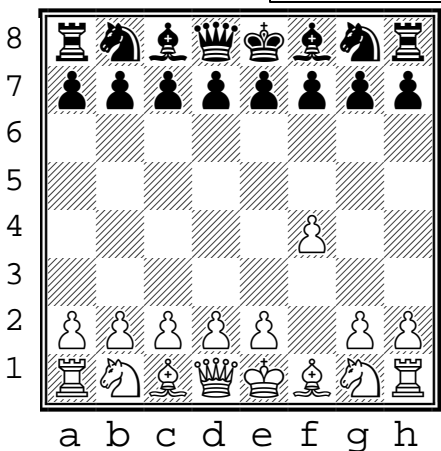
A02 (5)

1. ... openings

1. f4 ...

(black to move)

Top GM response



???

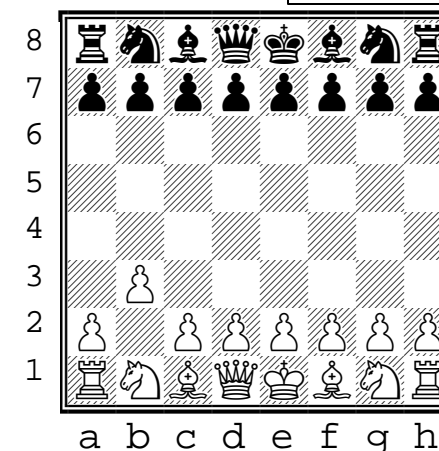
A01 (6)

1. ... openings

1. b3 ...

(black to move)

Top 2 GM responses



1. Print even/odd on front+back of card stock
2. Cut where gray bars overlap.



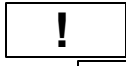
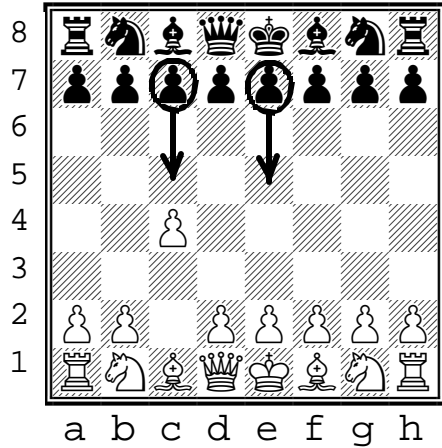
(3)

1. ... openings

(black to move)

Top 2 GM responses

- 1. c4 ...
(English Opening /
1. c5
.../Symmetrical var.)
- 1. ... e5
.../Bremen defense)



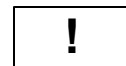
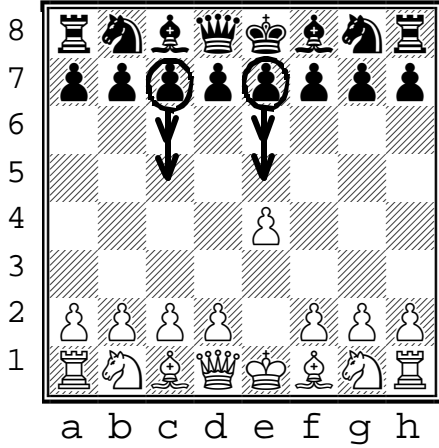
(2)

1. ... openings

(black to move)

Top 4 GM responses

- 1. e4 c5
(Sicilian defense)
- 1. e4 e5
(King's Pawn Game)
- 1. e4 e6
(French Defense)
- 1. e4 c6
(Caro-Kann defense)



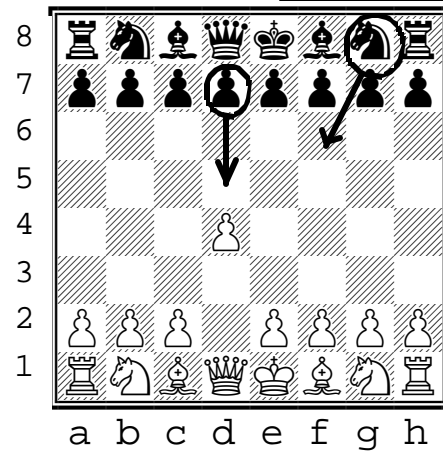
(1)

1. ... openings

(black to move)

Top 2 GM responses

- 1. d4 Nf6
(Indian defense)
- 1. d4 d5
(Queen's pawn game)



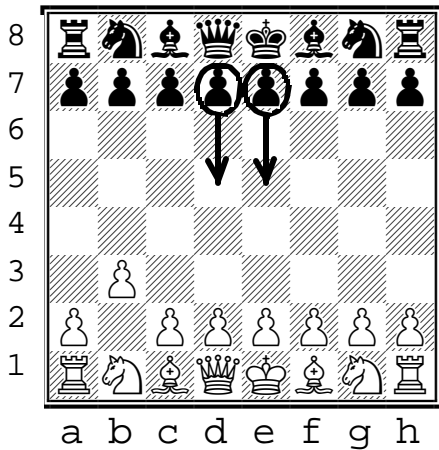
A01 (6)

1. ... openings

(black to move)

Top 2 GM responses

- 1. b3 d5
(Nimzo-Larsen attack /
Classical variation.)
- 1. b3 e5
(Nimzo-Larsen attack /
Modern variation.)



A03 (5)

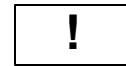
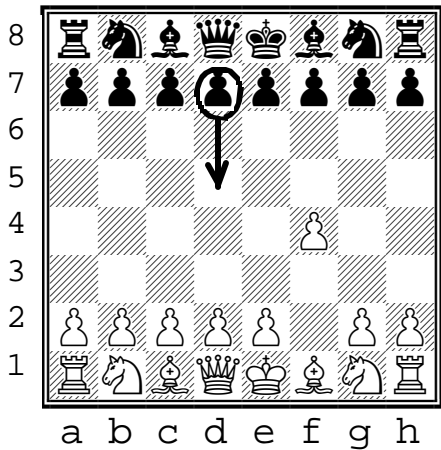
1. ... openings

(black to move)

Top GM response

- 1. f4 d5

(Bird system /
dutch variation)



A06 (4)

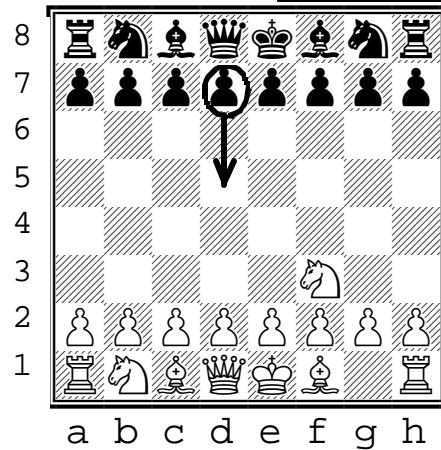
1. ... openings

(black to move)

Top GM response

- 1. Nf3 d5

(King's Indian
defense)



Chess Flash Cards!

1. ... Openings responses

???

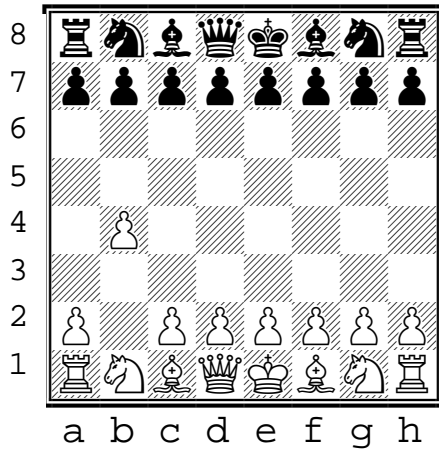
A00 (7)

1. ... openings

(black to move)

Top 2 GM responses

1. b4 ...



???

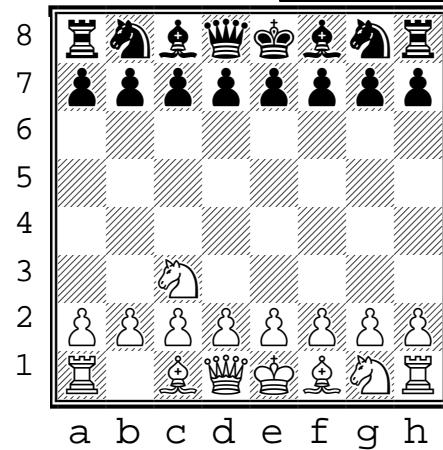
A00 (8)

1. ... openings

(black to move)

Top 2 GM responses

1. Nc3 ...



???

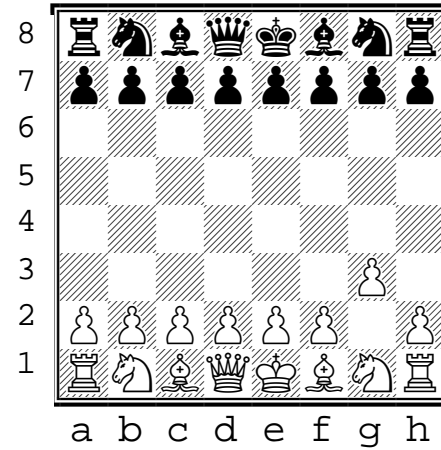
A00 (9)

1. ... openings

(black to move)

Top 2 GM responses

1. g3 ...



???

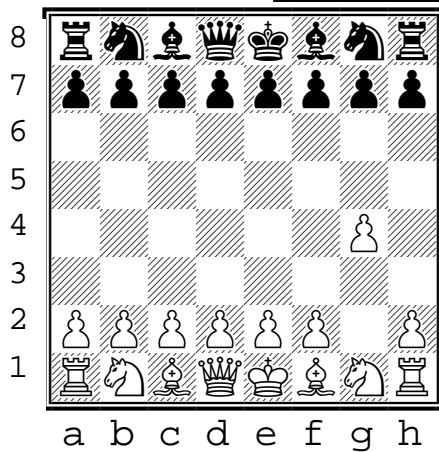
(10)

1. ... openings

(black to move)

Top 2 GM responses

1. g4 ...



???

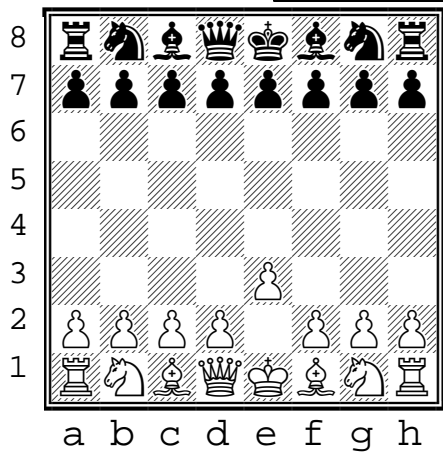
A00 (11)

1. ... openings

(black to move)

Top 2 GM responses

1. e3 ...



???

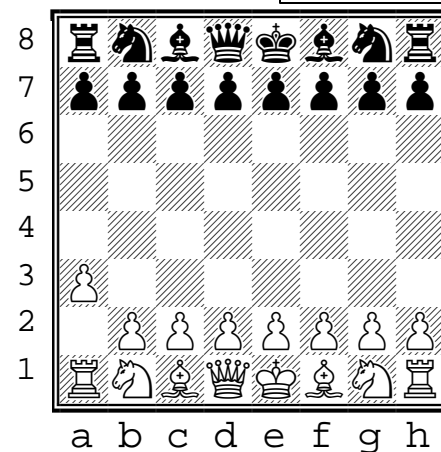
A00 (12)

1. ... openings

(black to move)

Top 2 GM responses

1. a3 ...



1. Print even/odd on front+back of card stock
2. Cut where gray bars overlap.

!

(9)

1. ... openings

(black to move)

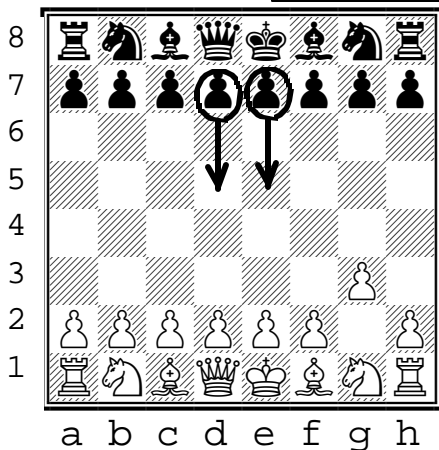
Top 2 GM responses

1. g3 ...
(Benko opening)

1. ... e5

or

1. ... d5



!

(8)

1. ... openings

(black to move)

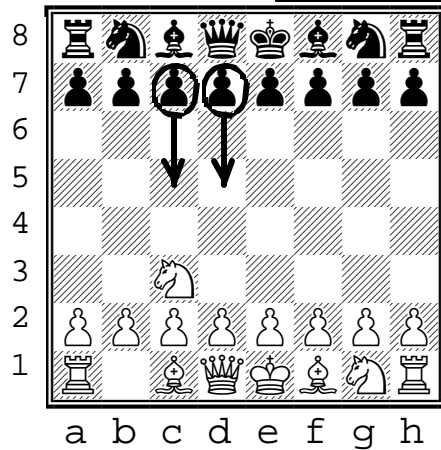
Top 2 GM responses

1. Nc3 ...
(Durst opening)

1. ... d5

or

1. ... c5



!

(7)

1. ... openings

(black to move)

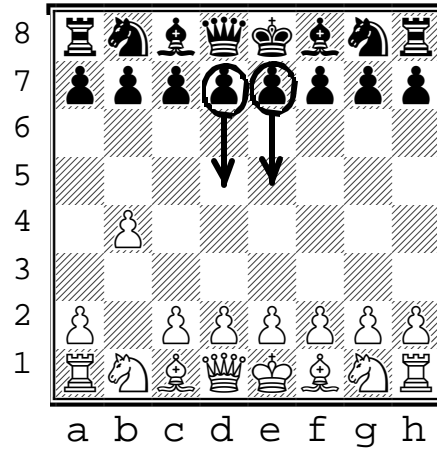
Top 2 GM responses

1. b4 ...
(Polish opening)

1. ... e5

or

1. ... d5



!

(12)

1. ... openings

(black to move)

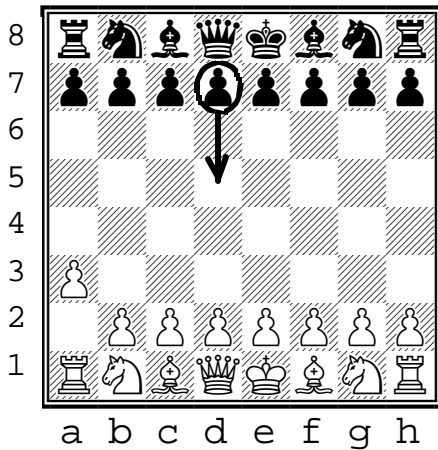
Top 2 GM responses

1. a3 ...
(Anderssen's Opening)

1. ... d5

or

1. ... e5



!

(11)

1. ... openings

(black to move)

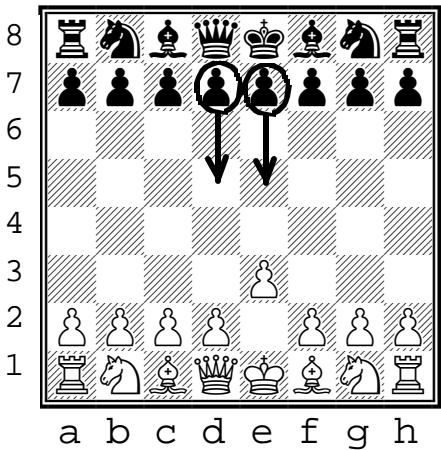
Top 2 GM responses

1. e3 ...
(Van't Kruijs Opening)

1. ... d5

or

1. ... e5



!

(10)

1. ... openings

(black to move)

Top 2 GM responses

1. g4 ...
(Grob opening)

1. ... d5

or

1. ... e5

