

???

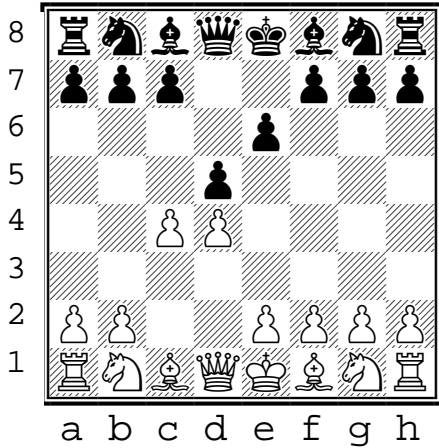
(1)

### Queen's Gambit

**3. xx**

(white to move)

1. d4 d5
2. c4 e6
3. ...



???

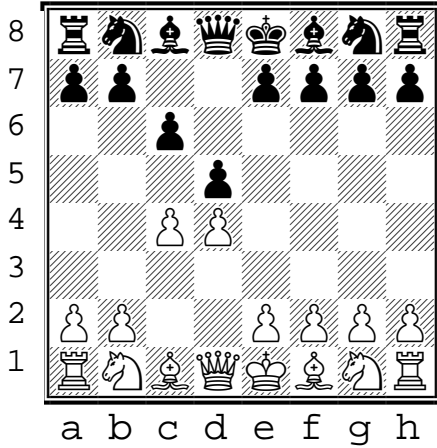
(2)

### Queen's Gambit

**3. xx**

(white to move)

1. d4 d5
2. c4 c6
3. ...



???

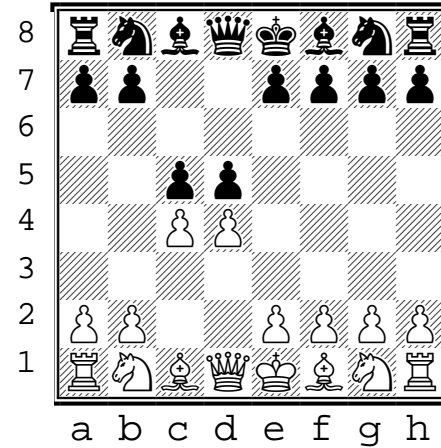
(3)

### Queen's Gambit

**3. xx**

(white to move)

1. d4 d5
2. c4 c5
3. ...



???

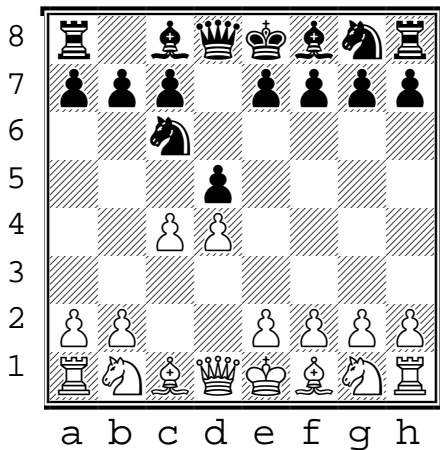
(4)

### Queen's Gambit

**3. xx**

(white to move)

1. d4 d5
2. c4 Nc6
3. ...



???

(5)

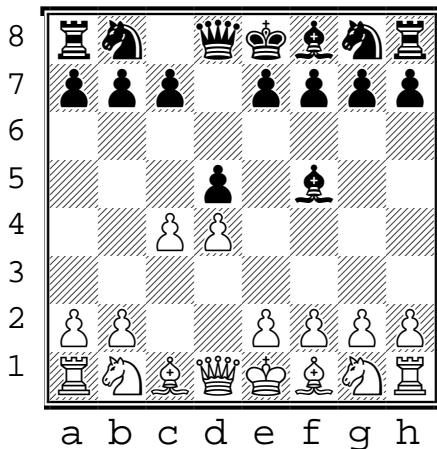
### Queen's Gambit

**3. xx**

(white to move)

1. d4 d5
2. c4 Bf5
3. ...

*Top 2 GM moves*



???

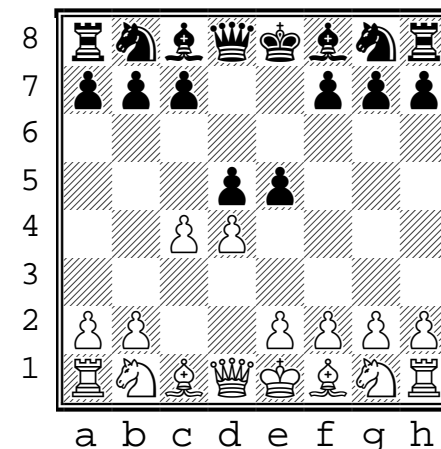
(6)

### Queen's Gambit

**3. xx**

(white to move)

1. d4 d5
2. c4 e5
3. ...



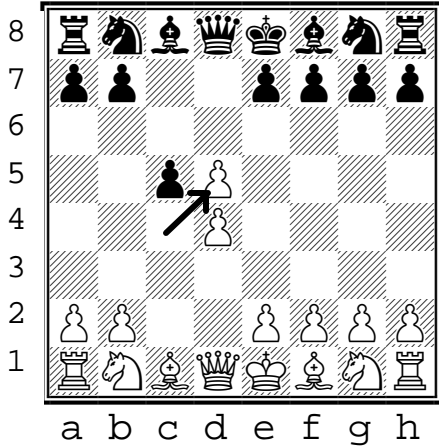
???

D02 (3)

**Queen's Gambit**

**3. XX**  
(white to move)

1. d4 d5
2. c4 c5
3. cxd5



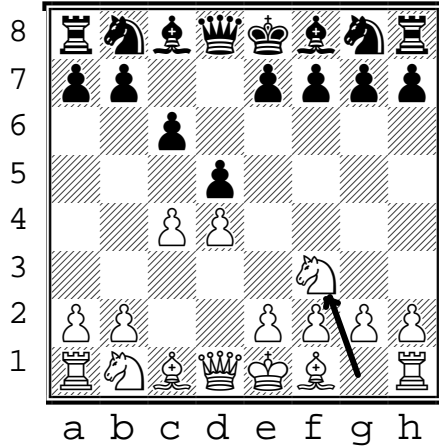
!

D10 (2)

**Queen's Gambit**

**3. XX**  
(white to move)

1. d4 d5
2. c4 c6
3. Nf3



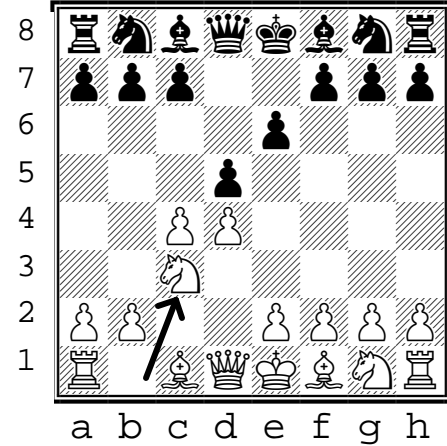
!

D30 (1)

**Queen's Gambit**

**3. XX**  
(white to move)

1. d4 d5
2. c4 e6
3. Nc3



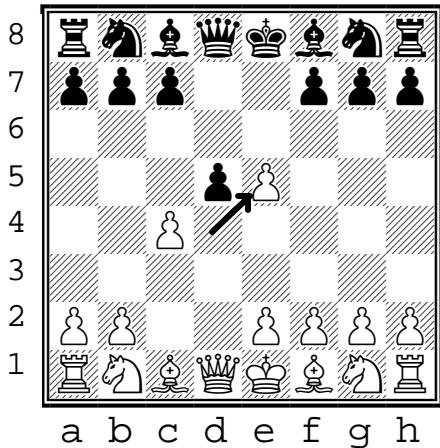
!

D08 (6)

**Queen's Gambit**

**3. XX**  
(white to move)

1. d4 d5
2. c4 e5
3. dxe5



!

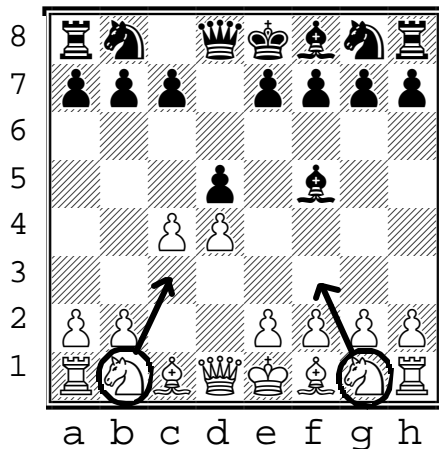
D02 (5)

**Queen's Gambit**

**3. XX**  
(white to move)

1. d4 d5
2. c4 Bf5
3. Nc3 or Nf3

*Top 2 GM moves*



!

D07 (4)

**Queen's Gambit**

**3. XX**  
(white to move)

1. d4 d5
2. c4 Nc6
3. Nc3

