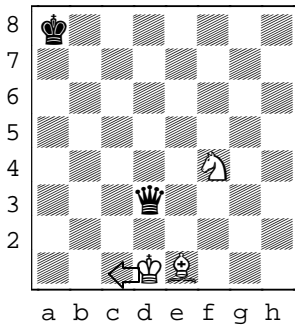


Getting out of check



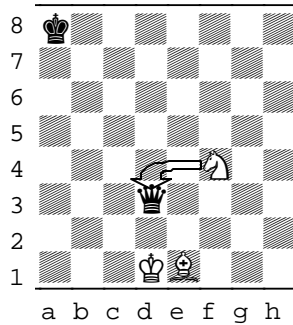
1) There are 3 ways to get out of check:

Move the king to a safe square



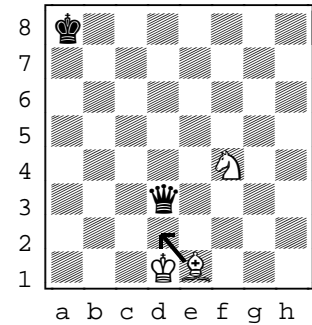
Example: Kd1-c1

Capture the attacking piece



Example: Nf4xd3

Move a piece in the way



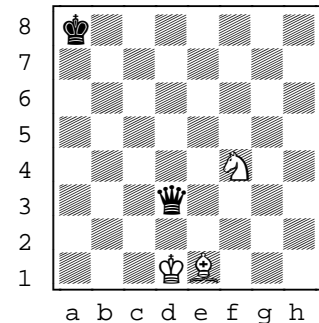
Example: Be1-d2

2) Points to remember :

- ◆ Use your move to develop your position (don't just flee)
- ◆ A counterattack can buy time to improve your position
- ◆ Examine all possible moves before choosing the best one

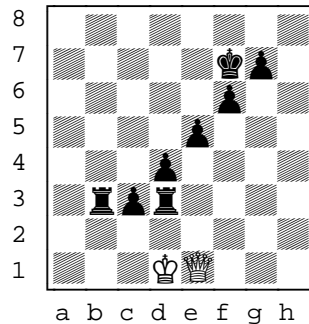
3) Solve the puzzle:

Review the three ways for white to get out of check and choose the best move.



4) Solve the puzzle:

Find the best move for white to get out of check.



5) Solve the puzzle:

Uh-oh. Black not only has white in check but also a fork on white's rook. Find the awesome move for white that will turn the game around.

