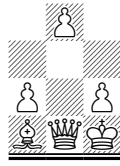


Openings: Response to 1. d4



Chess Club

Mini-Lesson

Level: Intermediate

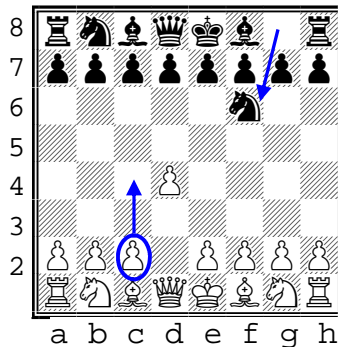
With the aid of computers, we can now analyze hundreds of thousands of games played over the centuries. From this analysis, we can see how often the master chess players choose certain openings. Here are the most frequent responses to 1. d4 in order of popularity.

... N-f6 *Indian Defense* ★★★

Used: 63%.

Places immediate pressure over two center squares a number of options.

Usually followed by 2. c4

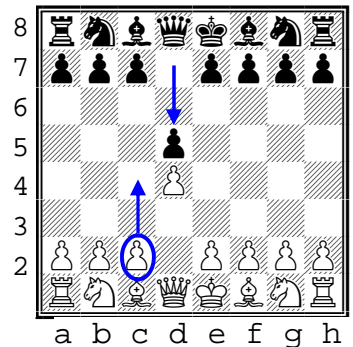


... d5 *Queen's pawn game* ★★★

Used: 27%.

Symmetrical response invites a number of variations.

Usually followed by: 2. c4

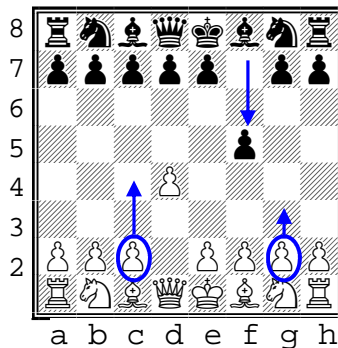


... f5 *Dutch Defense*

Used: 5.4%.

Unbalanced play has strong possibilities but requires certain degree of mastery.

Usually followed by 2. c4 or 2. g3

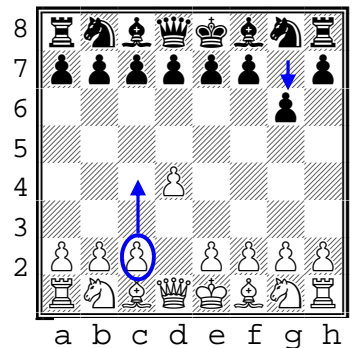


... g6 *Modern Defense*

Used: 1.4%.

Sets up for fianchetto of the king's bishop.

Usually followed by: 2. c4 Bg7 3. d6 e4

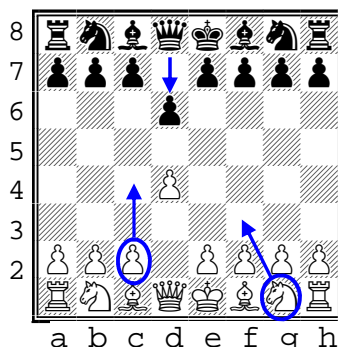


... d6 *Rat opening line*

Used: 1.3%.

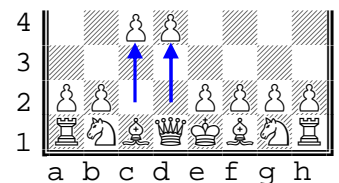
Black typically seeks a fianchetto of the king's bishop. Usually followed by:

2. c4 g6 or 2. Nf3 Bg4



6) White's typical response

- Note that the most popular 2nd move for white after d4 is c4. It's easy to remember and plan for.



7) Practice, practice, practice

Unsure about Queen pawn's openings? Play it until you are used to it. You may want to try "thinking out loud" with a helpful partner.