

# Openings: 1. e4 e5 2. Nf3



# Chess Club

Mini-Lesson

Level: Intermediate

## Main Line for Black

## Two great responses for white

... Nc6

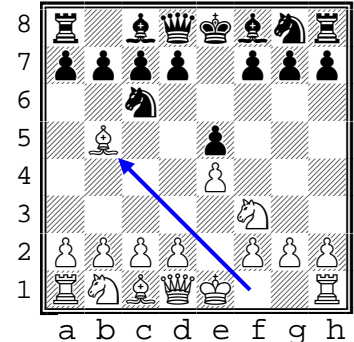
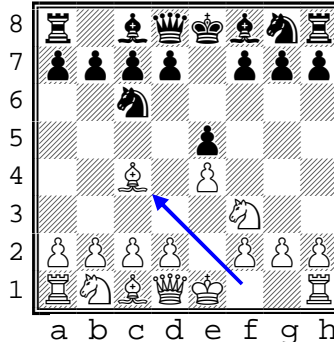
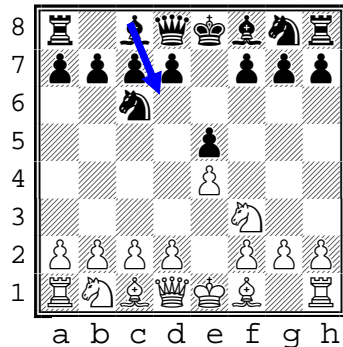
Two knights

A. Italian Game:  
3. Bc4

B. Ruy Lopez:  
3. Bb5

Why?

- develops the knight
- attacks center
- Defends the attacked e5 pawn



## Other lines

... Nf6

Petrov's defense

... d5

Queen's Pawn Counter-Gambit

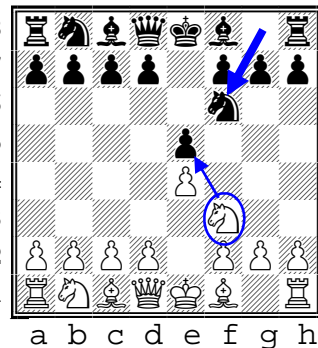
Why?

- develops the knight
- attacks center
- Attacks e4

But...

- Some tricky traps ahead

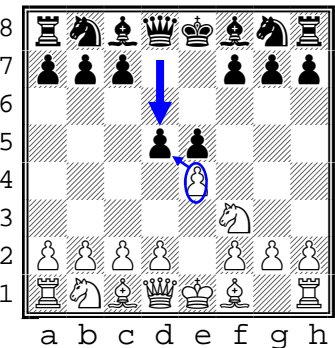
Best white move:  
3. Nxe5



Why?

- After exchanges, black will end up with only pawn at center
- But...
- Black queen has to come out early and subject to harassment

Best white move:  
3. exd5



... d6

Philidor's Defense

In summary...

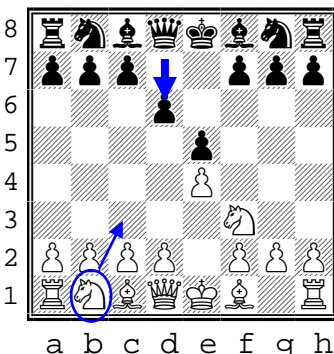
Why?

- defends d6 pawn
- Opens mobility for one bishop

But...

- Cramps mobility for other bishop

Best white move:  
3. Nc3



- A) Focus on the Nc6 main lines as they are strong and most frequently played
- B) See something unexpected? Then just develop normally. Let the other player make the first mistake.