

# Opening traps: 1. e4 e5 2. Qh5



# Chess Club

Mini-Lesson

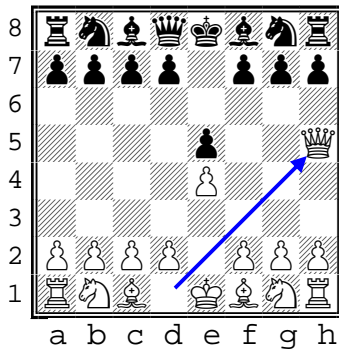
Level: Intermediate

This opening trap is played frequently against novices. It can be devastating if black doesn't know how to defend against it. But if black knows the right moves, black can turn it to their advantage.

1. e4 e5
2. Qh5 ...

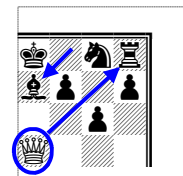
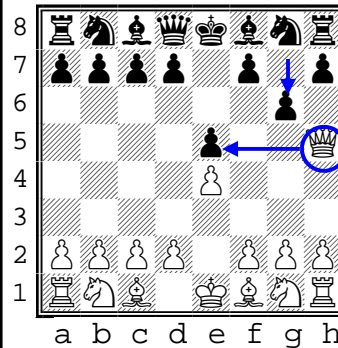
The Qh5 move is unusual. It seems careless but can be devastating against an inexperienced player.

Take a moment to examine the position. Ask yourself: what is the threat and how should I defend myself?



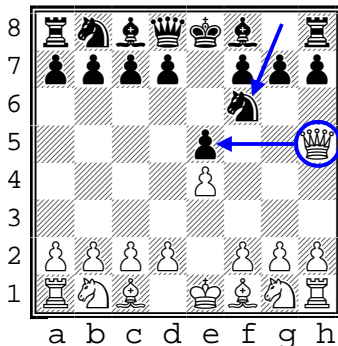
- Bad black response #1:**  
2. ... g6

This move allows white a move of **3. Qxe5+** to get a free pawn. But it doesn't stop there. Following any move to get out of check, white can get the rook with **Qxh8**.



- Bad black response #2:**  
2. ... Nf6

This move also allows white a move of **3. Qxe5+** to get a free pawn. It also creates a forcing move as black must move out of check. White can control the board with a series of attacking moves and end up with a positional and piece advantage.

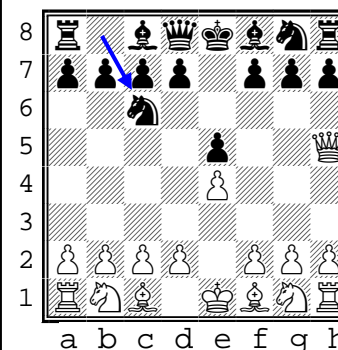


- Best black response:**  
2. ... Nc6

Ah, back to basics...

A simple move that defends the pawn under attack and develops the knight.

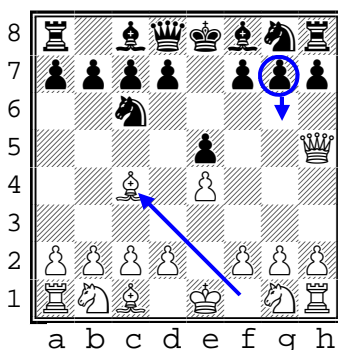
Black is out of immediate danger but still must be cautious.



- Next white threat:**  
3. Bc4

Hopefully every novice will recognize this as a potential **Scholars Mate** if white is allowed Qxf7++.

The absolutely best move for black here is **g6**. This stops the scholars Mate dead and puts white on the defensive.



- Next white threat:**  
4. Qf3

White has one more chance at Scholars mate with Qf3 (still hoping for Qxf7++).

The best move for black here is **Nf6**.

Notice how black successfully defended against the trap with careful analysis and play.

