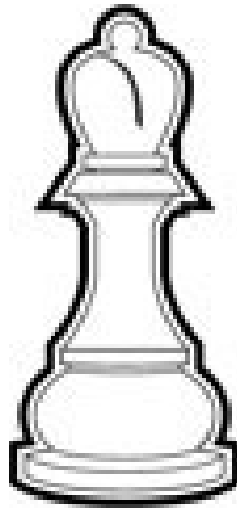


The

Bishop



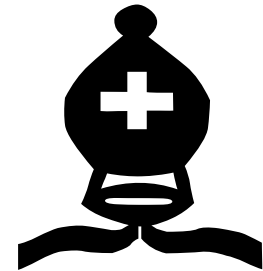
The **bishop** can be a formidable force by itself but especially when they team up with other pieces



Here is how the **bishop** is represented on board diagrams.

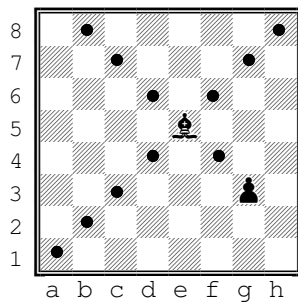
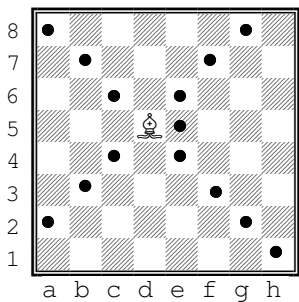


White Bishop

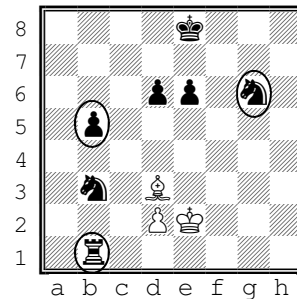


Black Bishop

The **bishop** can move diagonally for any number of squares in one move.



The **Bishop** captures opposing pieces by moving to the space occupied by the piece.

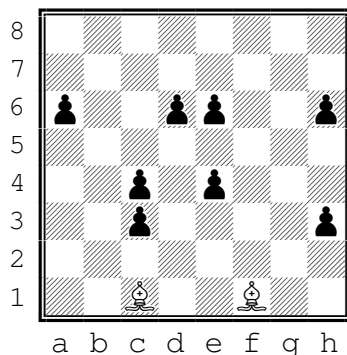


However the **bishop** cannot jump over any pieces in the way.

Here the white bishop can capture only the circled pieces.

Bishop-Pawn hunt!

Place 8 "sleeping" pawns randomly on the board. Place two **bishops** on opposite colors. Then capture all the pawns in as few moves as possible.



Starting Position: At the beginning of a game, the **bishops** start next to the king and queens.

