

The

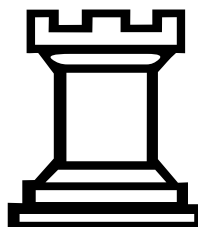
# Rook



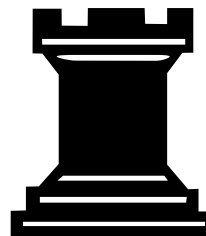
The rook is one of the more powerful pieces on the board.



Here is how the rook is represented on board diagrams.

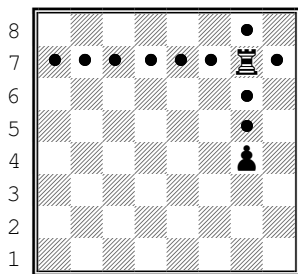
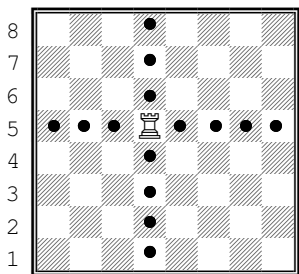


White Rook

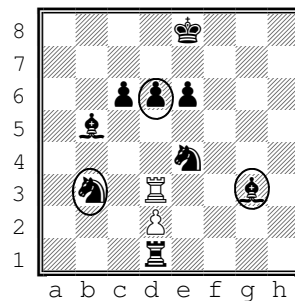


Black Rook

The rook can move up/down, or right/left, for any number of squares in one move.



The Rook captures opposing pieces by moving to the space occupied by the piece.

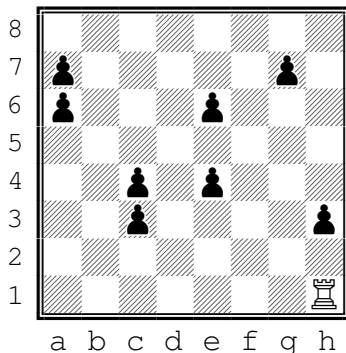


However the rook **cannot** jump over any pieces in the way.

Here the white rook can capture only the circled pieces.

### Rook-Pawn hunt!

Place 8 "sleeping" pawns randomly on the board. Use your rook to capture all the pawns in as few moves as possible.



**Starting Position:** At the beginning of a game, the rooks start at the corners of the board.

