

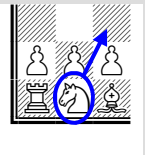
# Openings:

## 1. e4 e5 2. Nf3 Bc4



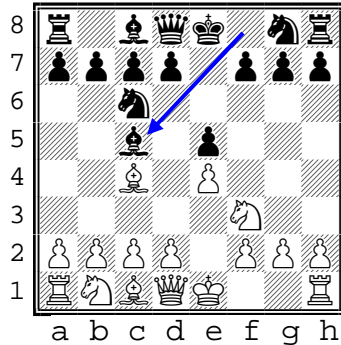
# Worksheet

Circle the piece to be moved, then draw an arrow to the target square

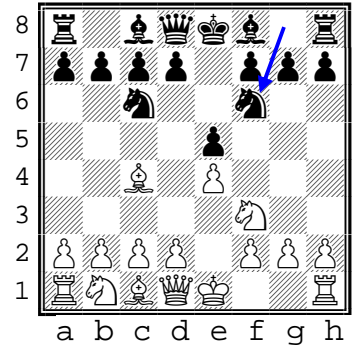


There are many "right" answers here. Analyze these positions, then apply opening principles to come up with some good moves. Then compare your answers to what the grandmasters use.

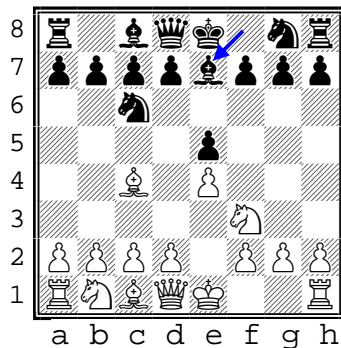
1. e4 e5
2. Nf3 Nf3
3. Bc4 Bc5
4. \_\_\_\_



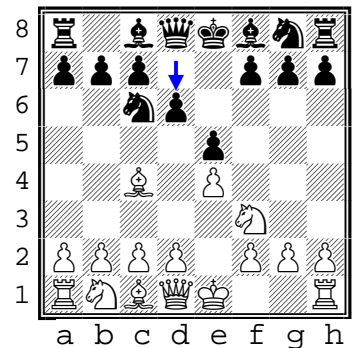
1. e4 e5
2. Nf3 Nf3
3. Bc4 Nf6
4. \_\_\_\_



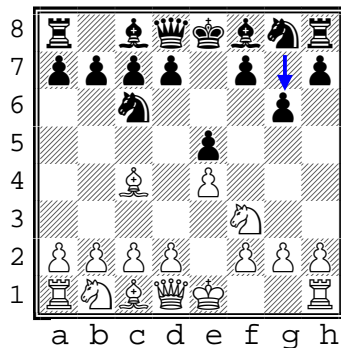
1. e4 e5
2. Nf3 Nf3
3. Bc4 Be7
4. \_\_\_\_



1. e4 e5
2. Nf3 Nf3
3. Bc4 d6
4. \_\_\_\_



1. e4 e5
2. Nf3 Nf3
3. Bc4 g6
4. \_\_\_\_



1. e4 e5
2. Nf3 Nf3
3. Bc4 h6
4. \_\_\_\_

