

Openings:

1. e4 e5 2. Nf3

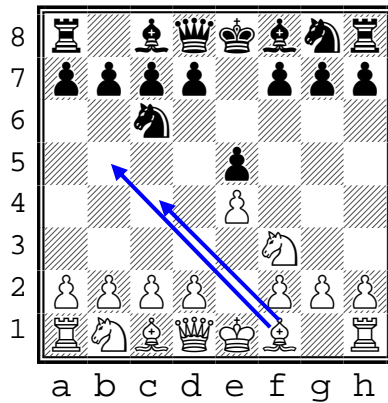


Worksheet

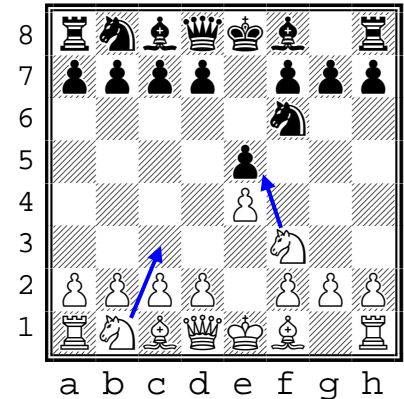
ANSWERS

Here are the moves that are most commonly played by grandmasters. If your choice matches, great but understand why it is a good move. If it does not match, you may want to reconsider.

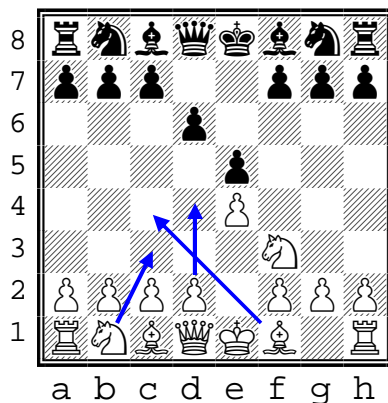
- A**
- 1. e4 e5
 - 2. Nf3 Nc6
 - 3. **Bc4**
... Italian game
 - 3. **Bb5**
... Ruy Lopez
- Another popular move:
- 3. Nc3
... 3 knights opening



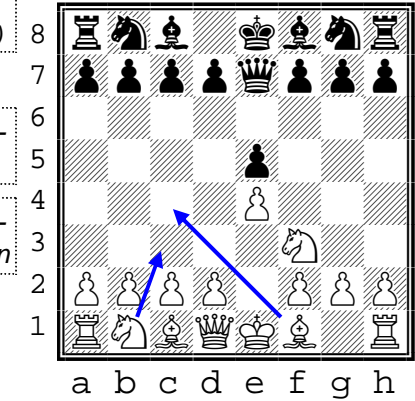
- B**
- 1. e4 e5
 - 2. Nf3 Nf6
 - 3. **Nxe5**
... Petrov
 - 3. **Nc3**
Petrov / 3 knights
- Another popular move:
- 3. d4
Petrov / Steinitz



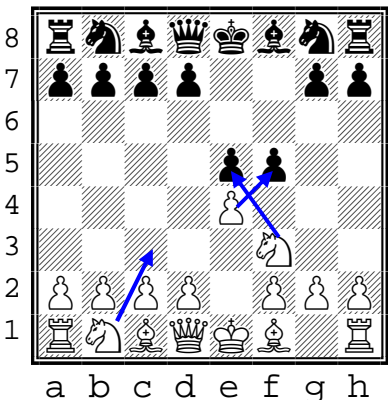
- C**
- 1. e4 e5
 - 2. Nf3 d6
(Philidor's Defense)
- Popular moves:
- 3. **Nc3** attacks center; Nd5 looks nice
 - 3. **Bc4** attacks center and weak c7 pawn
 - 3. **d4** popular with aggressive players



- D**
- 1. e4 e5
 - 2. Nf3 Qe7
(Gunderam defense)
- Popular moves:
- 3. **Nc3** attacks center; Nd5 looks nice
 - 3. **Bc4** attacks center and weak c7 pawn



- E**
- 1. e4 e5
 - 2. Nf3 f5
(Latvian Gambit)
- Popular moves:
- 3. **exf5** avoids annoying fxe4 move
 - 3. **Nc3** defends e4, attacks center
 - 3. **Nxe5** ... an aggressive line



- E**
- 1. e4 e5
 - 2. Nf3 d5
(Queen's Pawn Counter-Gambit)
- Popular moves:
- 3. **exd5** avoids annoying dxe4 move
 - 3. **Nxe5** ... an aggressive line

