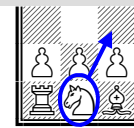


Openings: 1. e4 e5



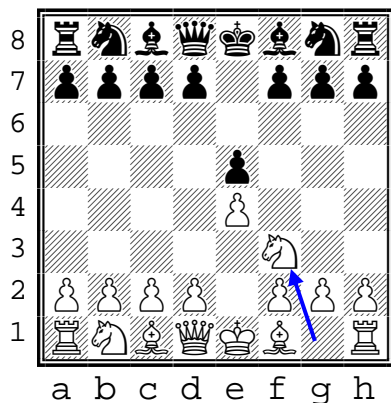
Worksheet

Circle the piece to be moved, then draw an arrow to the target square

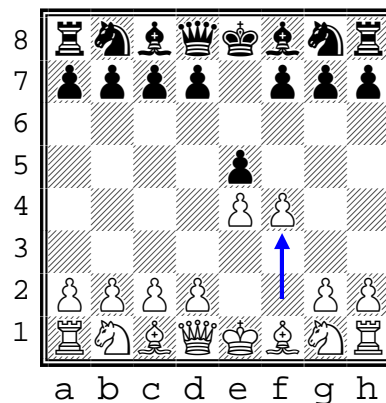


There are many "right" answers here. Analyze these positions, then apply opening principles to come up with some good moves. Then compare your answers to what the grandmasters use.

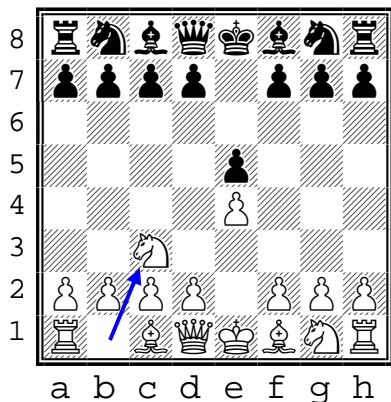
1. e4 e5
2. Nf3 _____



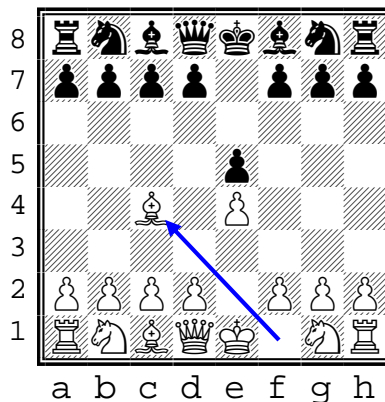
1. e4 e5
2. f4 _____



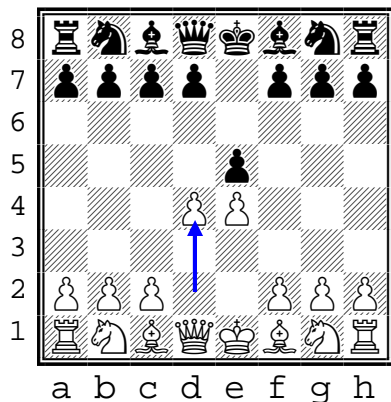
1. e4 e5
2. Nc3 _____



1. e4 e5
2. Bc4 _____



1. e4 e5
2. d4 _____



1. e4 e5
2. d3 _____

