

The

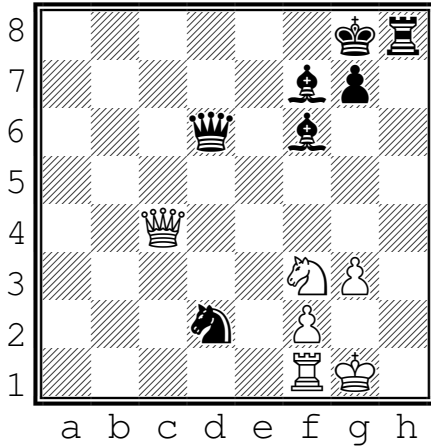
King



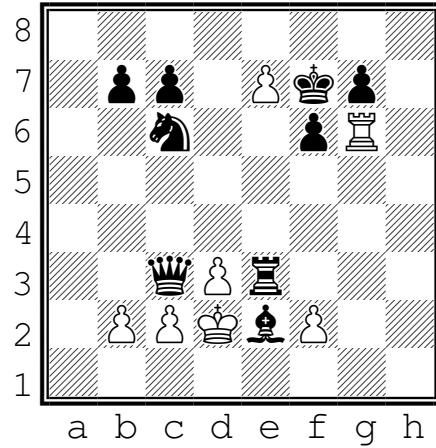
Name: _____

WORKSHEET

For every squares the white King can move to, place an "X"



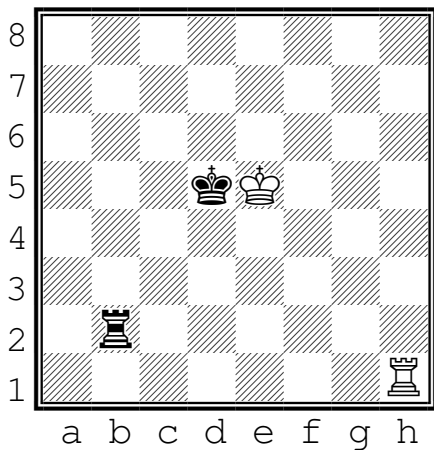
Circle every piece that the white King can capture.



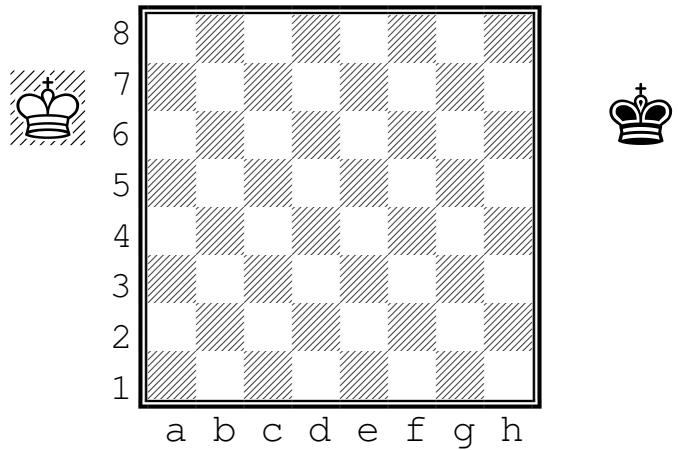
For every squares the black King can move to, place an "X"

Circle every piece that the black King can capture.

What is wrong with this position?



Indicate the starting position of the white king with a "W".



Indicate the starting position of the black king with a "B".